

# Luxter Installation

## \* Luxter - Pull out faucet \*



A. Pull out faucet



B. Fastener



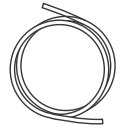
C. Weight Ball



D. Washer / Iron Piece



E. AC Adapter



F. Silicone tube



G. Short-Braided Hose



H. SS. Air-In Valve



I. Ozone machine



J. SS. Supply Hose  
(Hot/Cold)

## Kitchen Mixer Faucet

Name : FT1560SS / Luxter

Material : 304 Stainless steel

Size : 270(W)x300(H)mm

Features : Pull out faucet · Ozone cleaning cleaner.

## O-Clean (Ozone Machine)

Color: White

Material: ABS

Power Consumption: 8W (max)

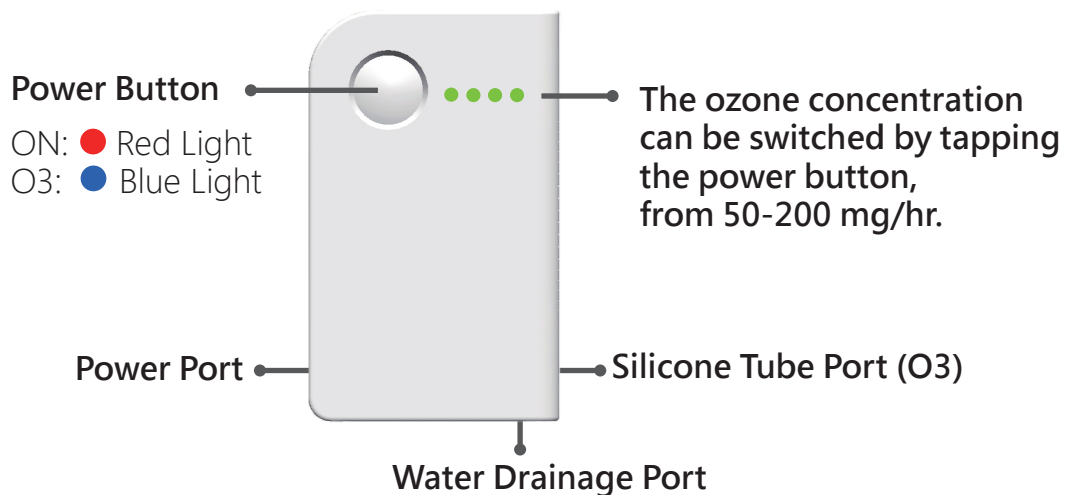
Output Voltage : DC15V

Input Voltage : 100-240V / 50-60Hz

Ozone Output: Adjustable 50-200 mg/hr

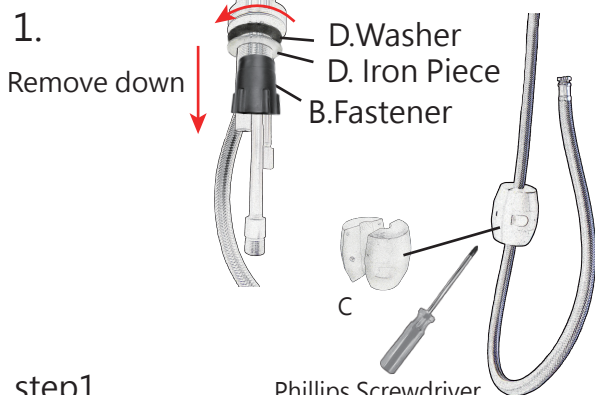
Size: 180 (L) x 110 (W) x 40 (H) mm

Function: It has 4 levels that can be switched the ozone concentration.

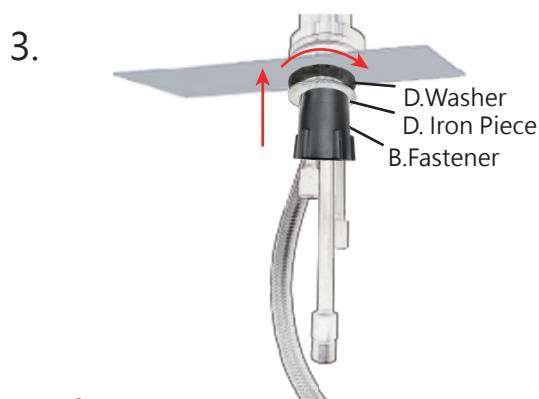


**Warning ! Do not drink ozonied non-potable water directly.**

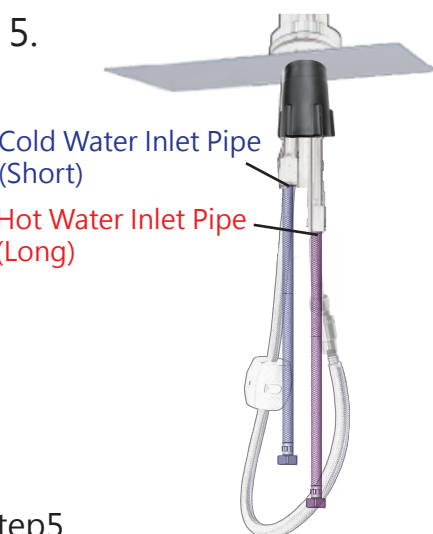
Ozone spillover density in an open area is under 0.01 ppm, certified by SGS test.



step1.  
First, remove (C) Weight Ball, (B) the Fastener, and (D) the Iron Piece in order.

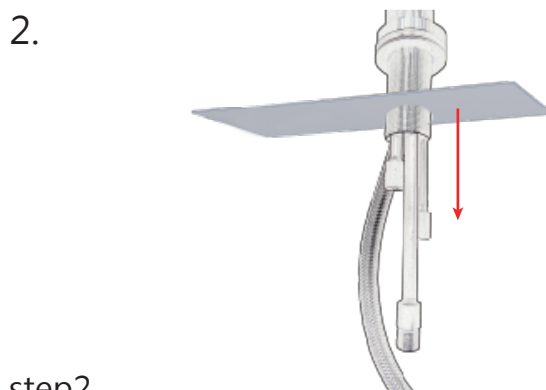


step3.  
Put (D) the Washer and (D) the Iron Piece through the main body in order, then screw (B) the Fastener beneath the sink.

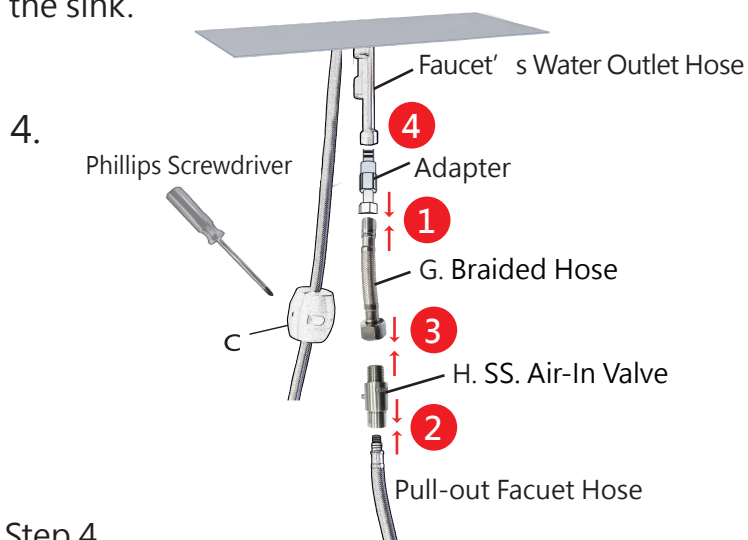


step5.  
Connect Cold/Hot water Hose

step6.  
1. Connect each side of (F) the Silicone Tube to (H) the SS. Air-In Valve and (I) the Ozone Machine.  
2. Connect (E) the AC Adapter and plug in the power supply.  
3. Long press the power button then the installation is complete.



step2.  
Place the faucet into the reserved hole through the sink.



Step 4.  
1. Connect the Adapter to (G) the short-Braided Hose first.  
2. Then connect (H) the SS. Air-In Valve to the Pull-out Faucet Hose.  
3. Connect the hex nut side of (G) the short-Braided Hose with (H) the SS. Air-In Valve.  
4. Connect the assembled pipe set (Step 1-2-3) to the Water Outlet Hose and use Philips Screwdriver to screw (C) Weight Ball to the Pull-out Faucet Hose in a proper position.

