

High-Quality Taiwan Manufacturing •  
Smart Touch Control • Fully Customizable Dimensions

## ERDEN Custom Mirror Collection

The Ultimate Light and Shadow Aesthetics Crafted for Builders,  
Interior Designers, and Premium Bathroom Spaces

# Over 20 Years of Exquisite Craftsmanship, Achieving the Perfect Mirror

Founded in 1999, ERDEN is an OEM manufacturing partner for world-renowned bathroom brands. We deeply understand the strict attention to detail required by designers and builders, providing the most flexible custom mirror solutions.



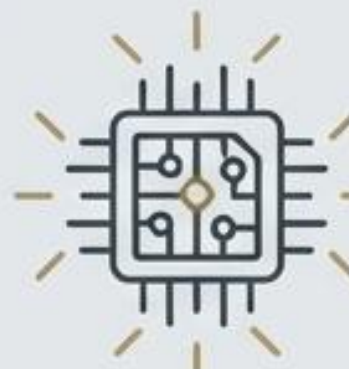
## Premium Materials

Carefully selected imported eco-friendly copper-free mirrors, offering significantly longer corrosion resistance compared to standard mirrors.



## Total Customization

Fully customizable sizes and shapes tailored precisely to your spatial requirements.



## Smart Tech

Integrating microwave sensors, defogging, and multi-functional LCD panels to create the ultimate smart bathroom.

200 mm

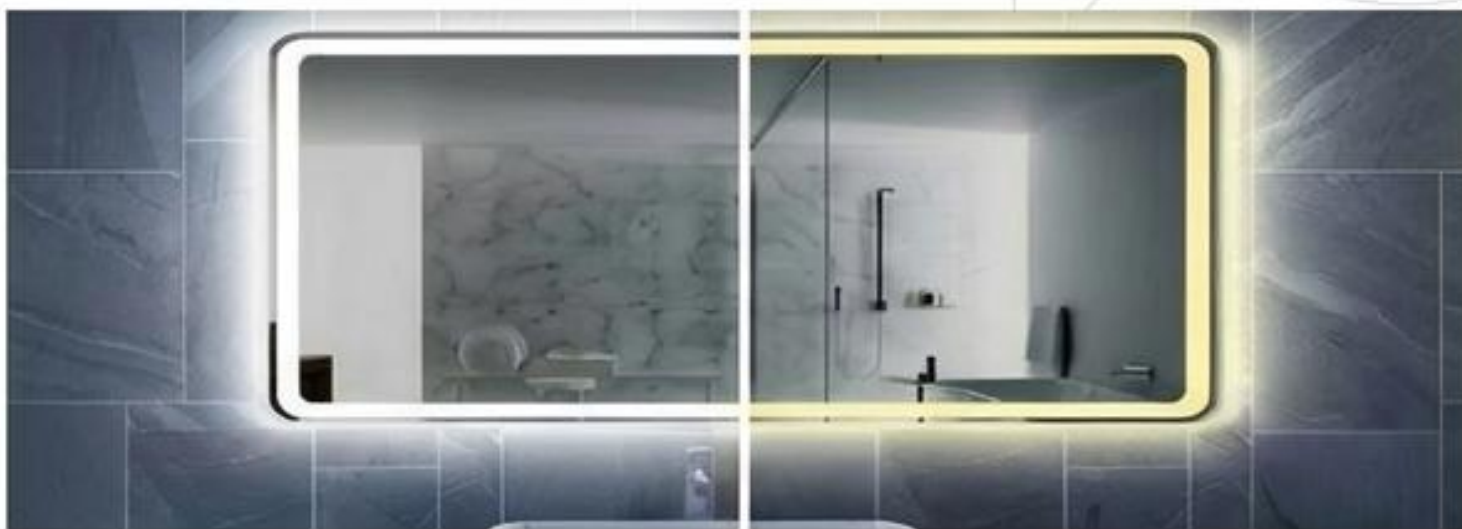
57 mm

83 mm

83 mm

40 mm

# Your Space, Defined by You: The 4 Main Mirror Collections



## Smart LED

The perfect combination of technology and aesthetics; lighting and defogging achieved in one step.



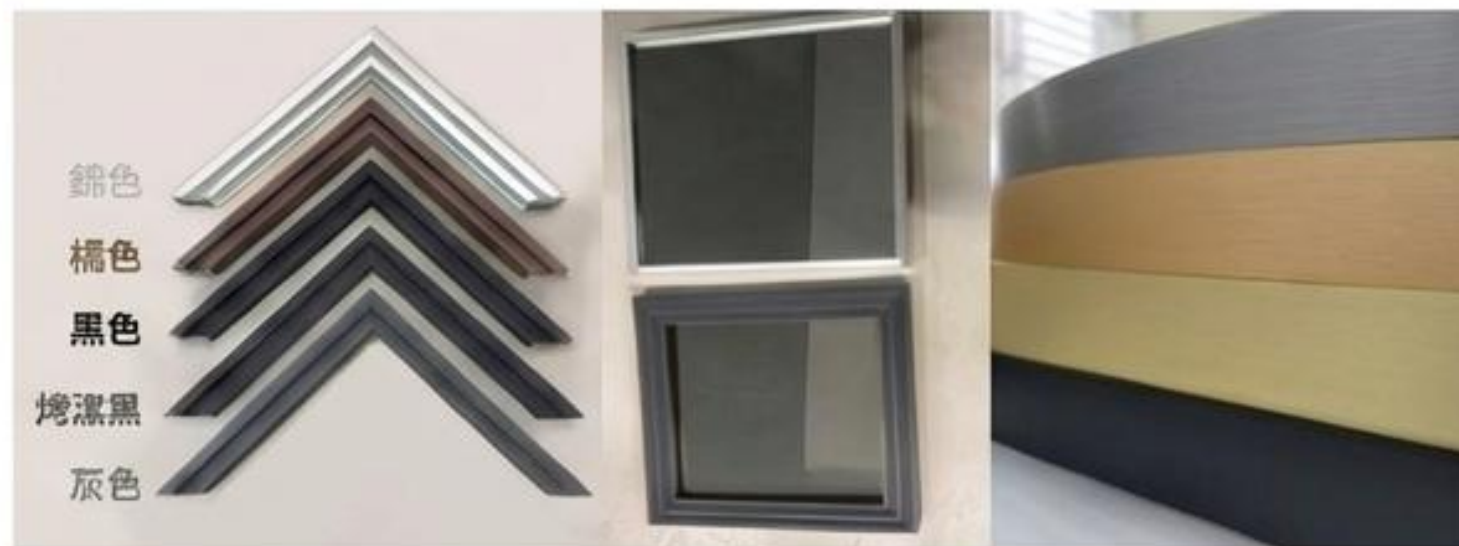
## Sandblasted

Exclusive patterns and LOGO laser engraving, showcasing unique personality and translucent artistry.



## Frameless

Clean and pure geometric lines that perfectly match any interior design style.



## Framed

Diverse aluminum and PS foam frames to add three-dimensional depth to your walls.

# Smart Touch LED Mirrors: Redefining Bathroom Lighting



## Defogging

Prevents moisture condensation, maintaining a high-definition mirror surface.



## Waterproof Touch

A safe switch specifically designed for humid environments.

Comparison Dimension	LED Mirror (ERDEN)	Traditional Vanity Light
Installation	Hidden behind mirror	Above or in front of mirror
Light Quality	Soft and even	Harsh and glaring
Facial Visuals	Shadowless, perfect facial illumination	Prone to creating facial shadows

# Shaping Spatial Ambiance: 3 Color Temperatures, Freely Matched



## 6000K White

Bright and clear. Suitable for modern minimalist, commercial spaces, or makeup areas requiring high detail.



## 4000K Neutral

Natural and mild, closely resembling natural daylight. Suitable for most residential bathrooms.



## 3000K Warm

Warm and relaxing. Creates the lazy luxury feel of a five-star hotel.

Light source configuration can be selected according to your specific needs.

# Smart Interaction: Multi-function Sensors and LCD Panels

Based on project level, providing options for upgrade from no-touch sensing to full-function smart panels.

## Millimeter Wave Radar Sensing (No-Touch Radar)



### Millimeter Wave Radar Sensing

Approaching within 1 meter automatically illuminates; automatically turns off 20 seconds after leaving. Fully non-contact, extremely hygienic.

## 5-Tier LCD Options



- 1 Wave sensor switch
- 2 Touch + Time display
- 3 Touch + Defog + Time display
- 4 Time/Date/Temperature display
- 5 Flagship: Integrated Bluetooth music playback



# Sandblasting & Laser Engraving: Your Creativity, Perfect Light Transmission



## Edging Sandblasting & Backlighting

Combined with backlight technology, light is precisely guided to the mirror surface, creating a unique dual-effect of wall washing and direct illumination.



## Customized Graphic Design

Supports exclusive text, patterns, and geometric line sandblasting.

## Corporate LOGO Laser Engraving

Exclusive brand identity for hotel and commercial office projects to enhance spatial recognition.

Specification Notes: A correctly scaled AI vector file must be provided (suggested laser engraving area within 15x15cm).

# Special Shapes: Unconventional Spatial Highlights



Round Mirror



Pill Shape



Soft-Rectangle

## Round aluminum-framed mirror 50 cm diameter



## Circle ◆ Rounded Square ◆ Racetrack Shape

Round 60 / 70 / 80 cm

Rounded Square 80 × 60 / 70 × 50 cm ; 100 × 70 cm (Black only)

Racetrack Shape 100 × 60 / 80 × 55 cm ; 80 × 50 cm (Black only)



灰色

鈦金色

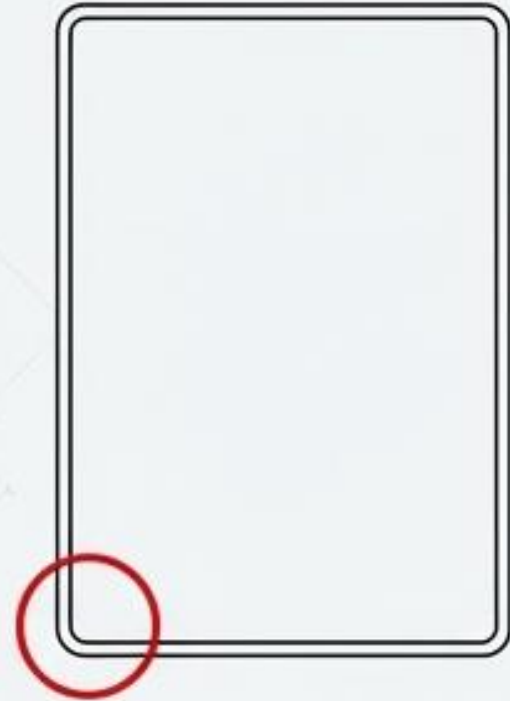
金色

黑色



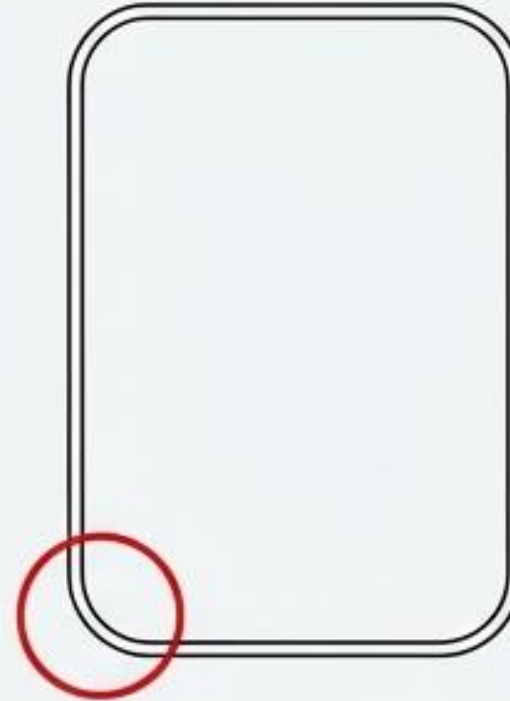
# Minimalist Frameless Design: The Ultimate Pure Geometric Vocabulary

**Shape Options:** Rectangle • Soft-Rectangle • Round (Standard dia. 60/70/80cm) • Pill Shape (Standard 60x100cm / 55x80cm)



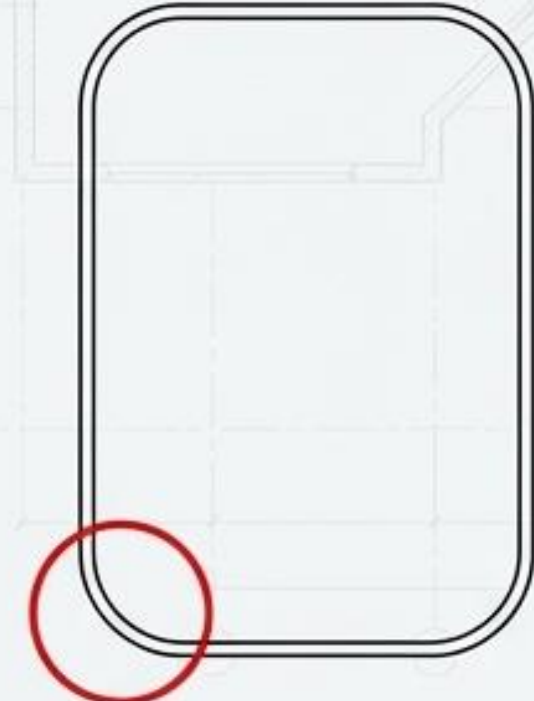
## **20R (Corner Radius 20mm)**

Sharp and subtle curves, perfect for modern minimalism.



## **35R (Corner Radius 35mm)**

Comfortable curves providing the best visual balance.



## **50R (Corner Radius 50mm)**

Soft and large curves, ideal for warm residential styles.

**Edge Craftsmanship:** Edges can be finished with a '3-part beveled edge' or a 'polished edge,' ensuring smooth and safe handling.

# Aluminum Frame Material Library: Framing the Three-Dimensional Conor Conwe

## Frame Profiles Comparison



### Ultra-Narrow Frame

Face Width 0.8cm  
(Side Thickness 2.5cm) – Presents a light, modern light-luxury texture.



### Deep Frame

Face Width 2.5cm  
(Side Thickness 1.8cm) – Visually bold, suitable for industrial style or strong personalized spaces.

## Material Swatches (Matte Brushed / Lacquer Finish)



Silver



Brown  
(Brown)



Black



Matte Black  
(Matte Black)



Titanium Grey  
(Titanium Grey)



White  
(White)



# PS Foam Frame Style Library: A Dialogue Between Classic and Modern

## Classic Series

Ornate carvings with antique gold and silver textures. Extremely wide selection of widths (48mm to 99mm), crafted specifically for European classic or neo-classic decors.



## Modern 30 Series

Geometric embossed patterns with metallic cool tones. Standard width is 30mm (paired with a 3mm mirror), suitable for avant-garde or urban modern styles.



Note: A wide variety of PS foam frame styles are available for selection.

# Custom Mirrors: Technical Specifications Overview

<b>Substrate</b>	5mm Eco-friendly copper-free mirror
<b>Dimensions</b>	No fixed limits; fully custom upon request. Standard geometric shapes like round and pill are available.
<b>Total Depth</b>	Mirror 0.5cm + Hidden backboard 3cm (or 5cm) = Finished total depth approx. 3.5cm ~ 5.5cm.
<b>Lighting</b>	<b>T5 LED</b> tubes / High-brightness LED strips (3000K Warm / 4000K Neutral / 6000K White).
<b>Design Files</b>	Sandblasting and LOGO engraving require accurately scaled AI vector files.

Note: Our factory focuses exclusively on high-quality manufacturing. Products come with complete accessories for easy installation. We do not provide on-site measurement or installation services.

# Professional Quality Guarantee & After-Sales Commitment



## One-Year Original Factory Warranty

- Coverage: Smart touch panel buttons, transformers, and electronic core components.
- Commitment: For damage occurring under normal environmental use within the warranty period, contact ERDEN for comprehensive technical assistance and processing.



## Non-Warranty & Consumables Scope

- LED strips, T5 tubes, and the glass mirror body are considered normal consumables.
- Damage caused by use in highly corrosive environments, or damage resulting from artificial/external factors, is not covered under the warranty.

# Start Creating Your Exclusive Light & Shadow Space

We sincerely welcome builders, interior designers, distributors, and clients with custom mirror needs to contact us.

Please provide your business card/company info, along with design files or size requirements, and we will provide you with an accurate custom quote.



Service Hotline:  
886-4-2531-2575



Email:  
sales@strongltd.com.tw



Official Website:  
www.strongltd.com.tw



Manufacturing Base:  
Taiwan - No. 82, Sec. 2, Minzu Rd.,  
Tanzi Dist., Taichung City

Official LINE ID: @tfu4534l



Hint: Please send a sticker after adding to initiate the chat.